

# V100 Series 2 3/4" Frame Depth Single Hung

## V100 SERIES SINGLE HUNG

### FEATURES

- ◇ **Framing System**
  - 2 3/4" main frame
- ◇ **Enhanced Design**
  - Mitered and welded corners
  - Integral Nailing Fin
- ◇ **Glazing**
  - 3/4" insulated glass
- ◇ **Hardware**
  - Block and tackle balancers
- ◇ **Screen**
  - Half screen
  - Extruded aluminum frame with BetterVue™ mesh with WaterShed® technology
- ◇ **Colors**
  - White vinyl (interior/exterior)

### BENEFITS

- ◇ Perfect value-engineered product for commercial projects 3-stories and less
- ◇ Integral Nail Fin system allows the V100 Series to adapt to any project's build

### OPTIONS

- ◇ **Available Configurations**
  - Single Hung
- ◇ **Muntin Choices**
  - 5/8" Internal lites available
- ◇ **Nailing Fin**
- ◇ **J-Channel Snap-on Trim**
- ◇ **Screen**
  - Available without screen
- ◇ **Glazing**
  - EnergyBasic Low-E Glass by Quaker
  - Energy 3S Low-E glass by Quaker
  - Capillary tubes
- ◇ **Mulling**
  - Choose from standard zero mull or 1/2" structural mull
- ◇ **Colors**
  - High-performance Textured Black laminate (exterior only with White vinyl interior)
  - Limitations on availability may apply

### PERFORMANCE

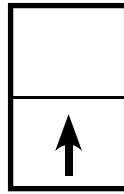
- ◇ Structural & Thermal (test reports and thermal simulations available upon request)

Model	Single Hung
NAFS Rating	R-40
Test Size	40" x 63"
Design Pressure (P.S.F.)	60.15
Air Infiltration at 25 MPH (cfm/ft <sup>2</sup> )	<0.30
Water Resistance (P.S.F.)	6.06
CR (Condensation Resistance) (with Low-E/argon)	59-60
U-Value (with EnergyBasic or Energy 3S glass package)	0.30
SHGC (with EnergyBasic or Energy 3S glass package)	0.22 - 0.34

CR, U-Value and SHGC values shown are a range based on the glass packages available for this product. Test results were achieved through all-window testing (not center-of-glass testing), and without grids. The addition of optional grids may cause the results to vary slightly.

Our products are tested to the standards of and certified by some of the foremost organizations in the fenestration industry.

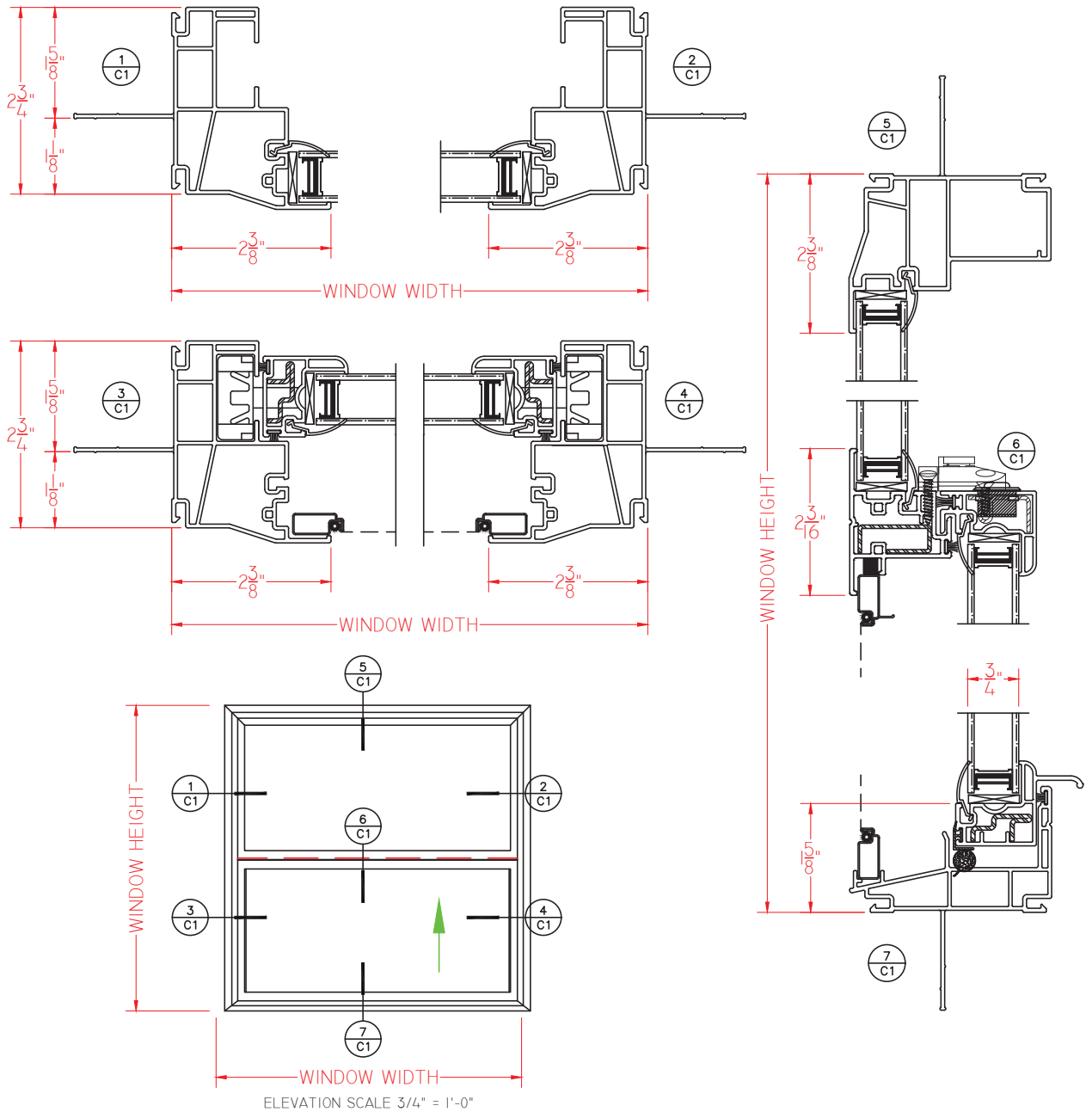




# V100 Series 2 3/4" Frame Depth Single Hung

## V100 SERIES SINGLE HUNG

This document contains confidential and proprietary information intended for the private use of Quaker.  
© 2019 Quaker Window Products Co., INC. All rights reserved.  
Quaker reserves the right to change any/all designs without notice. Due to periodic re-certification requirements, result shown may vary.



SCALE 6"=1'-0"

Our products are tested to the standards of and certified by some of the foremost organizations in the fenestration industry.

